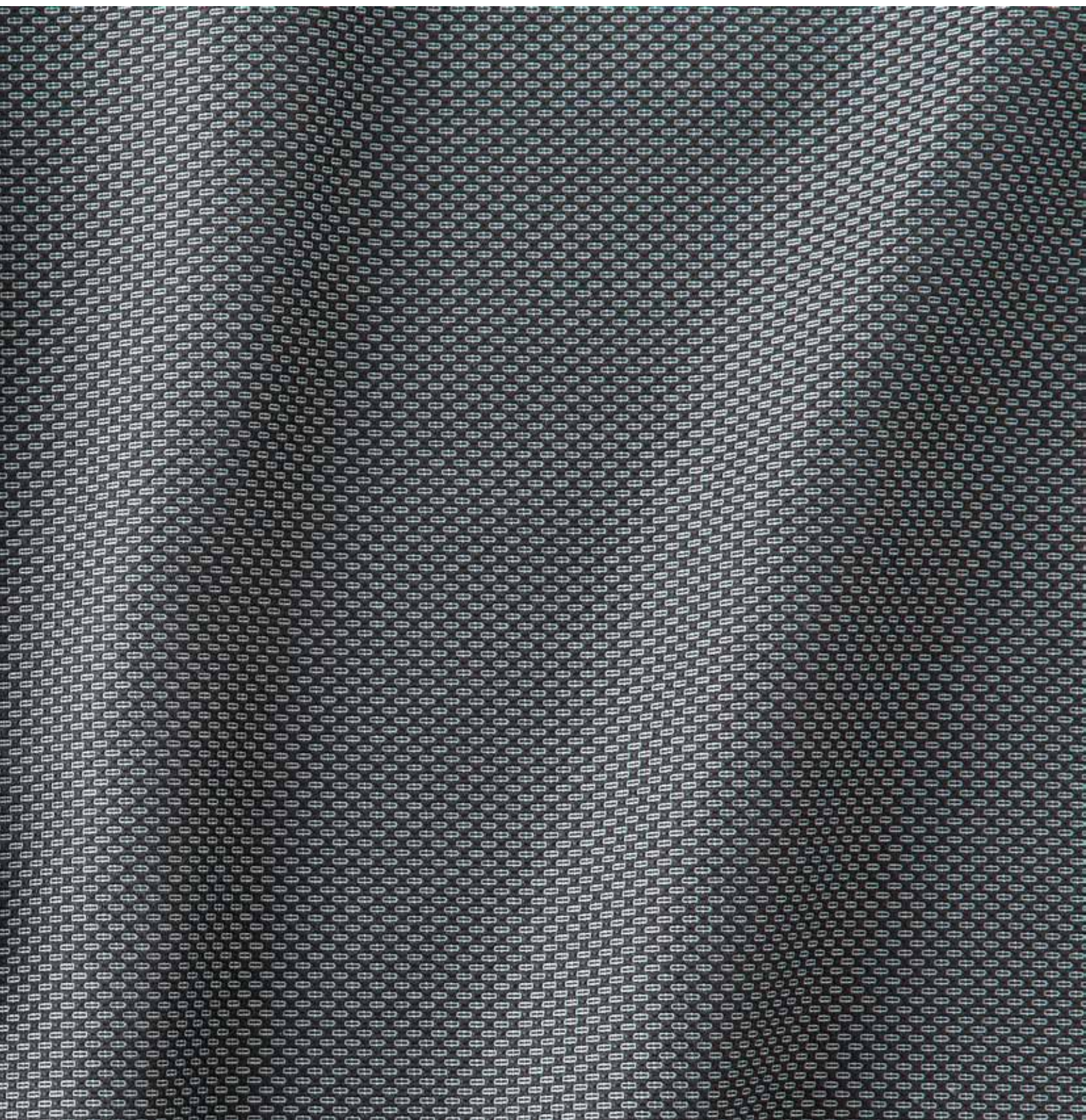


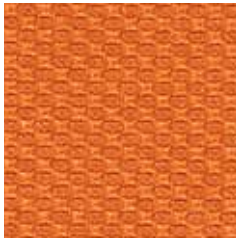
Ultra

 climatex®

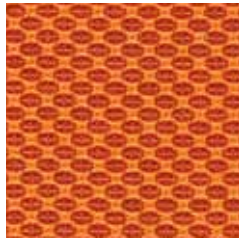


Ultra

 climatex®



491 008-222



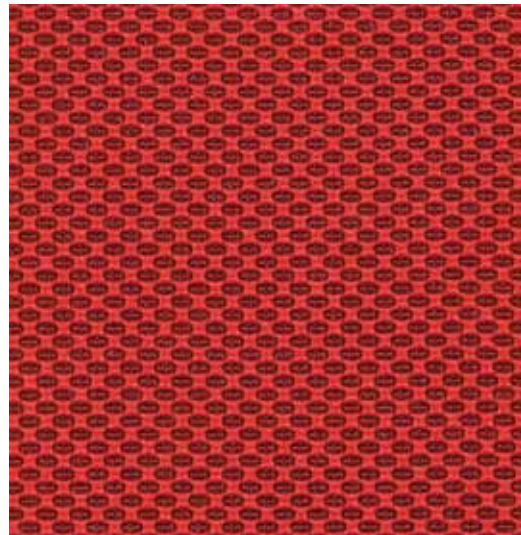
491 008-233



491 008-333



491 008-373



491 008-353



491 008-783



491 008-385



491 008-585



491 008-575



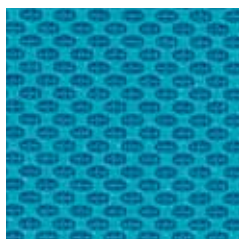
491 008-565



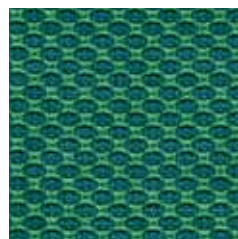
491 008-555



491 008-915



491 008-523



491 008-655



491 008-696

Ultra

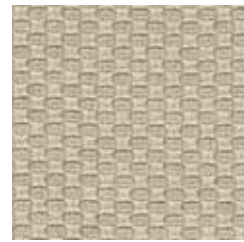
 climatex®



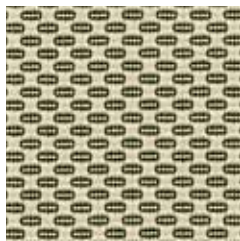
491 008-111



491 008-110



491 008-123



491 008-199



491 008-153



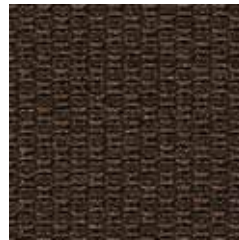
491 008-132



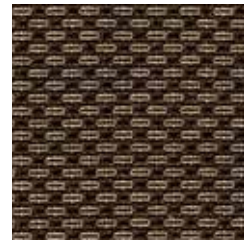
491 008-961



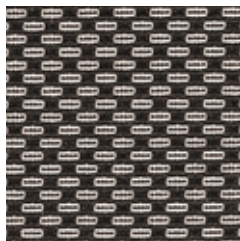
491 008-792



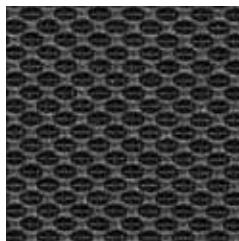
491 008-777



491 008-721



491 008-951



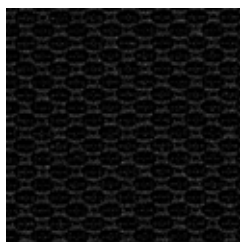
491 008-942



491 008-925



491 008-972



491 008-999



491 008-985



491 008-971



491 008-976

Ultra

 climatex®

Design

Climatex

Farben Colors Colori Couleur

33

Material Composition Composizione Composition

72 % Cradura™, PA

16 % Certified Virgin Wool, WV

12 % Redesigned Lenzing FR™, CV FR

Nutzbreite Nominal Width Larghezza utilizzabile Largeur utile

140 cm

Gewicht Weight Peso Poids

437 g/lfm

Schallabsorbtion Sound absorbtion Assorbimento acustico Absorption acoustique

$\alpha_w = 0,50$

Scheuerfestigkeit Abrasion resistance Resistenza all'abrasione Résistance à l'abrasion

500'000 Martindale, EN ISO 12947-2

Pilling Résistance au boulochage

4, EN ISO 12945-2

Lichtechtheit Light fastness Solidità alla luce Stabilité aux UV

6 - 7, EN ISO 105-B02

Reibechtheit Fastness to rubbing Resistenza allo sfregamento Résistance au frottement

dry 4 - 5, wet 4 - 5, EN ISO 105-X12

Brandnormen Fire standards Norme antincendio Normes incendie

EN 1021-1/2

BS 5852-0/1

IMO Resolution MSC 307 (88) Annex 1, Part 8

California TB 117, Class 1

Pflege Care Cura Conseil d'entretien



Climatex AG
Switzerland

info@climatex.com
www.climatex.com

